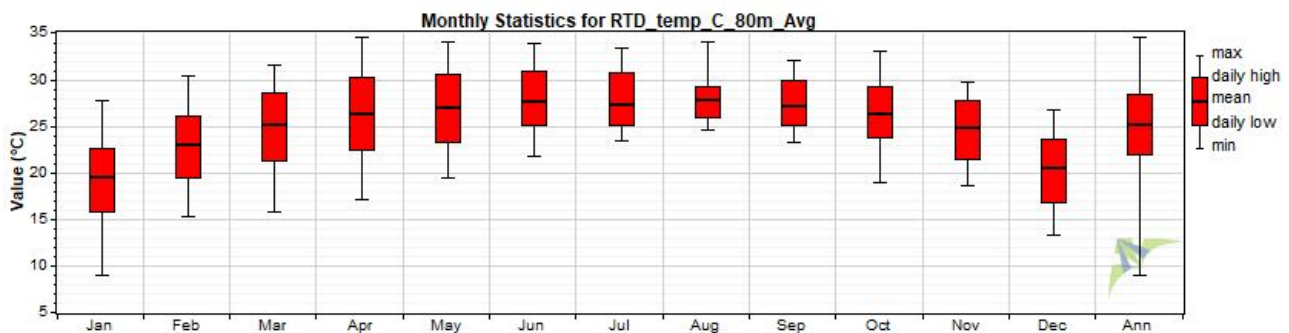


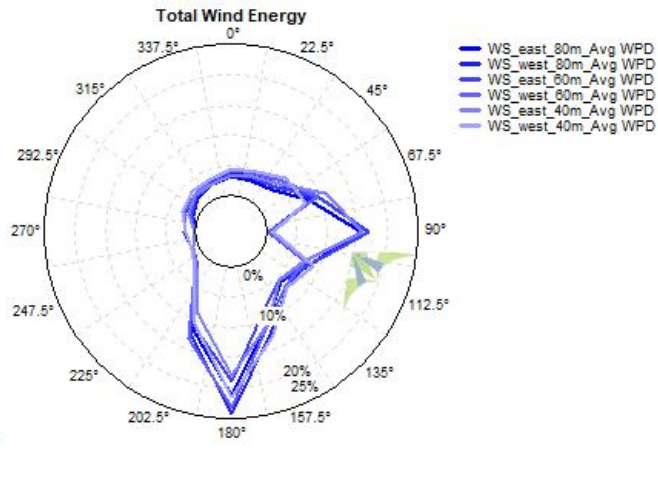
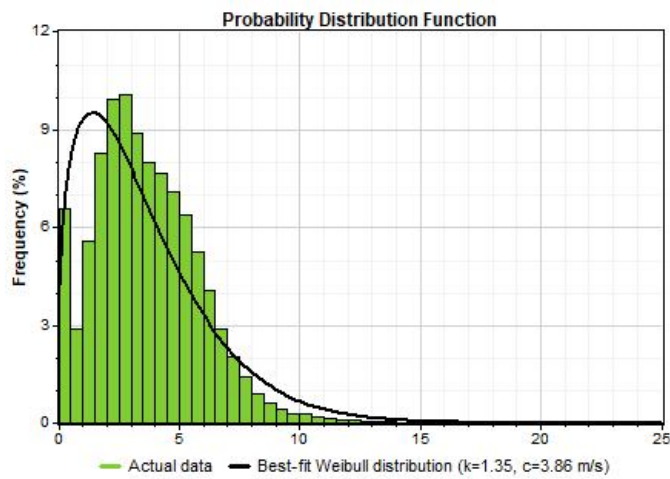
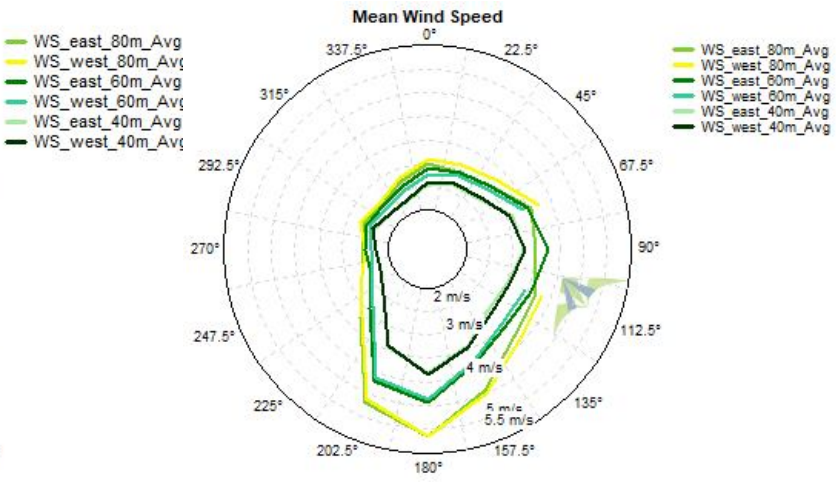
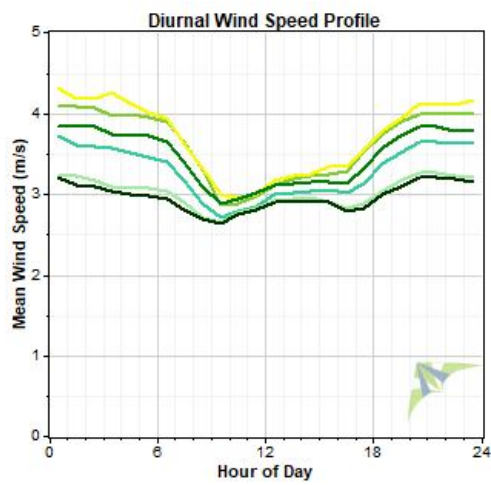
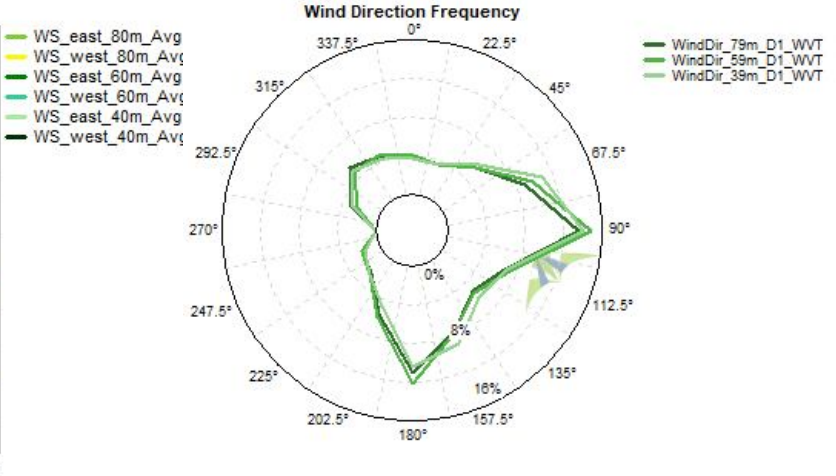
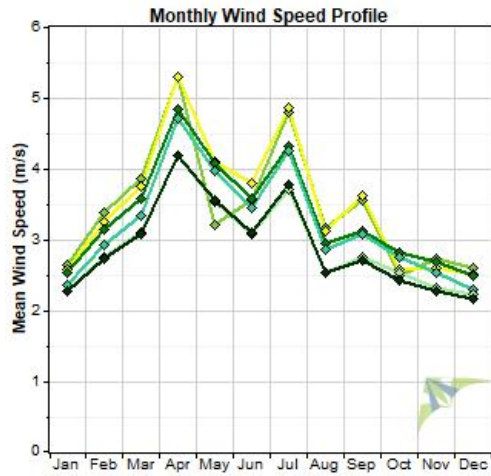
Data Set Properties

Report Created: 4/11/2018 10:14 using Windographer 3.3.10
 Filter Settings: <Unflagged data>

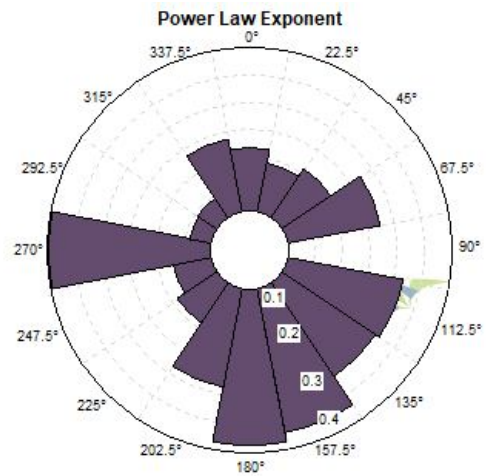
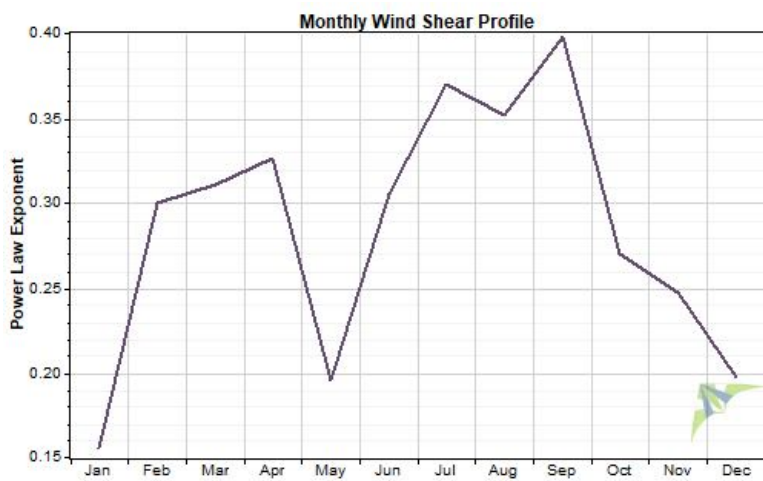
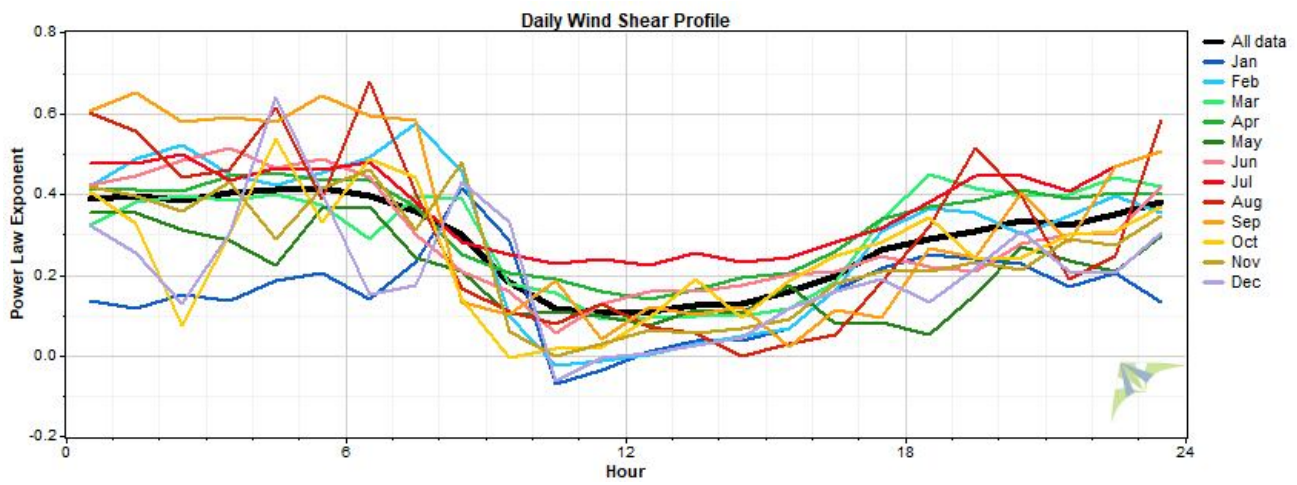
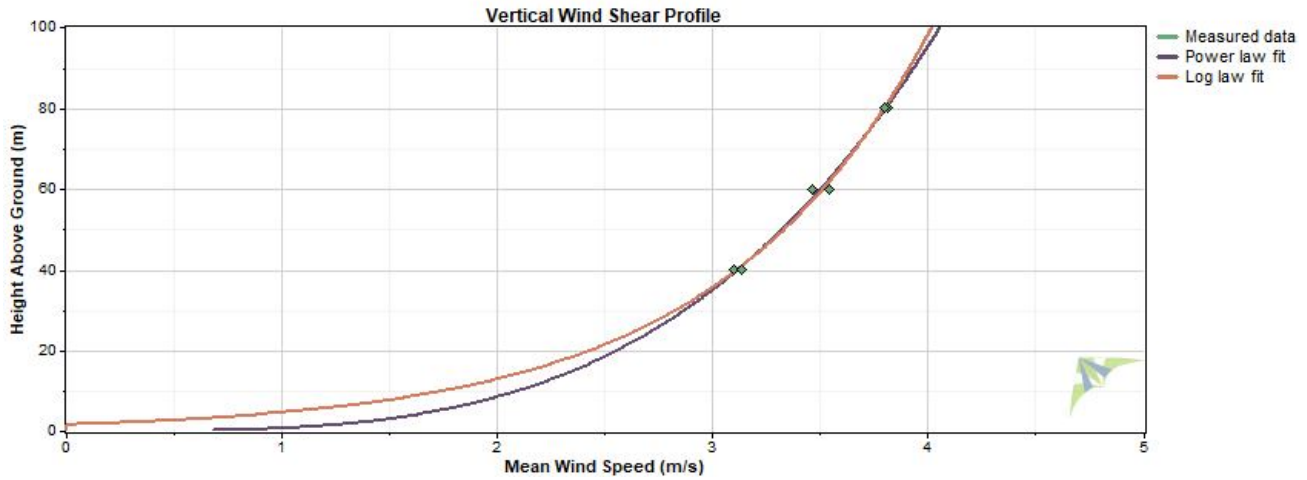
Variable	Value
Latitude	N 24.377780
Longitude	E 91.574620
Elevation	35 m
Start date	10/19/2015 16:50
End date	11/22/2017 10:10
Duration	25 months
Length of time step	10 minutes
Calm threshold	1 m/s
Mean temperature	25.3 °C
Mean pressure	997.4 mbar
Mean air density	1.175 kg/m ³
Power density at 50m	35 W/m ²
Wind power class	1
Power law exponent	0.288
Surface roughness	1.72 m
Roughness class	4.36



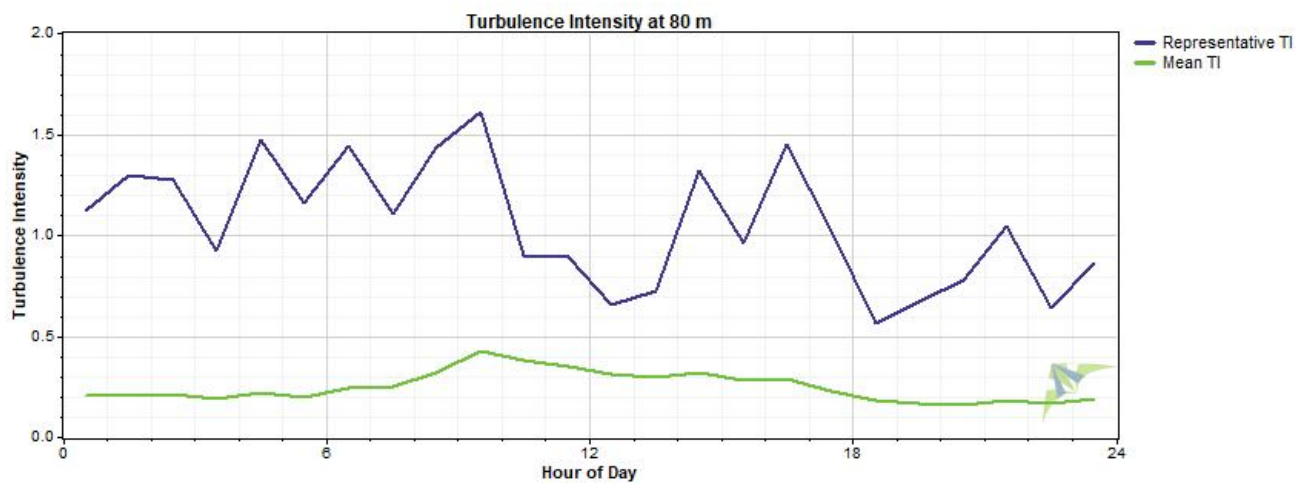
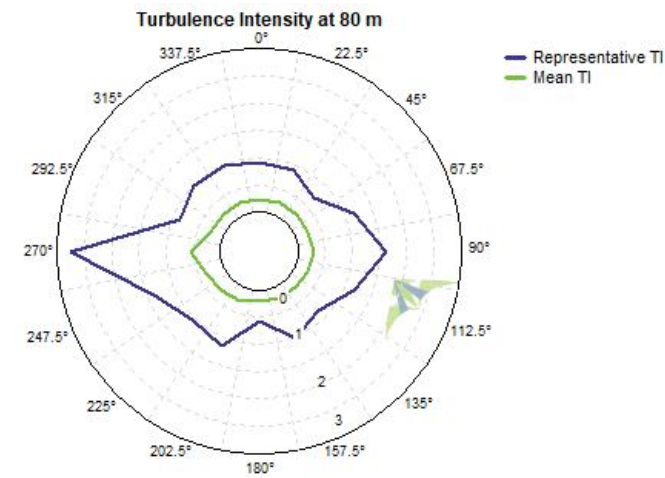
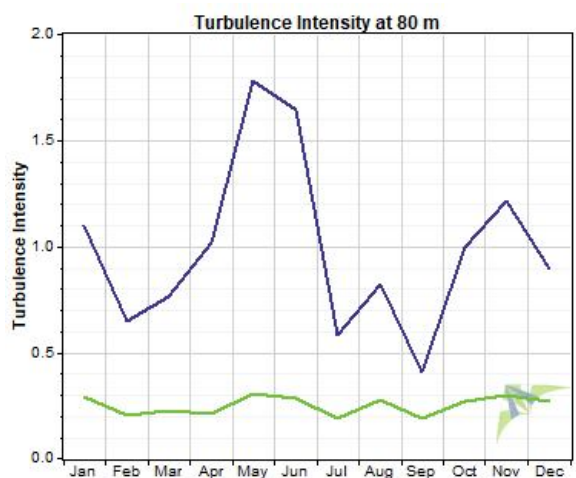
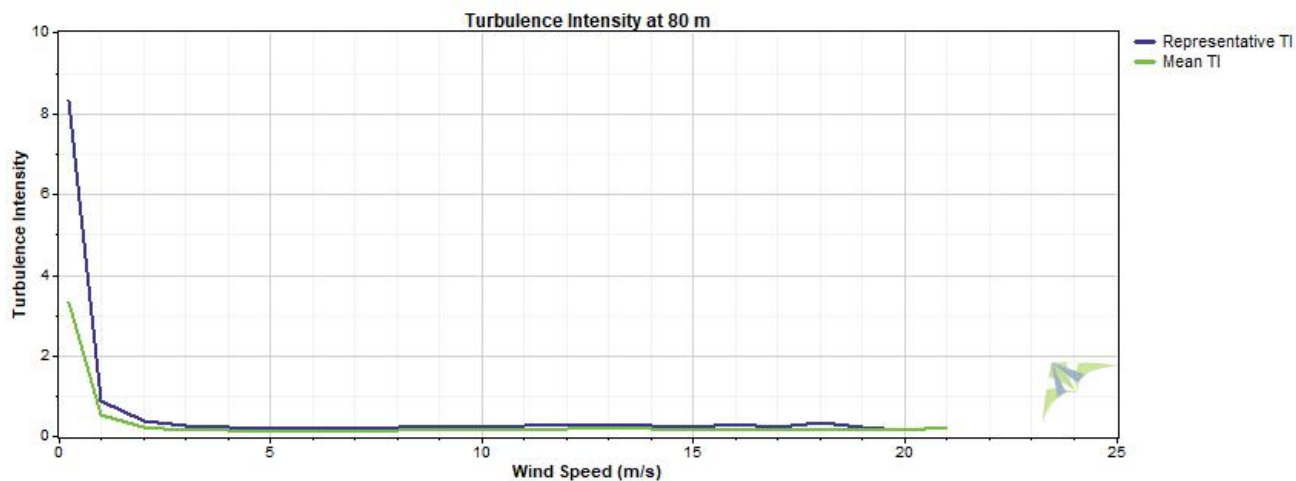
Wind Speed and Direction



Wind Shear



Turbulence Intensity



Data Column Properties

#	Label	Units	Height	Possible Data Points	Valid Data Points	Recovery Rate (%)	Mean	Min	Max	Std. Dev
1	RECORD	%		110,120	69,819	63.40	17,410	0	44,208	12,698
2	WS_east_80m_Avg	m/s	80 m	110,120	51,649	46.90	3.630	0.000	20.810	2.182
3	WS_east_80m_Max	m/s	80 m	110,120	51,649	46.90	4.991	0.000	34.000	2.891
4	WS_east_80m_Min	m/s	80 m	110,120	51,649	46.90	2.268	0.000	14.030	1.713
5	WS_east_80m_Std	m/s	80 m	110,120	51,649	46.90	0.572	0.000	7.954	0.377
6	WS_west_80m_Avg	m/s	80 m	110,120	45,830	41.62	3.700	0.000	20.980	2.186
7	WS_west_80m_Max	m/s	80 m	110,120	45,830	41.62	5.221	0.000	34.840	2.905
8	WS_west_80m_Min	m/s	80 m	110,120	45,830	41.62	2.143	0.000	12.550	1.716
9	WS_west_80m_Std	m/s	80 m	110,120	45,830	41.62	0.652	0.000	8.120	0.417
10	WS_east_60m_Avg	m/s	60 m	110,120	65,759	59.72	3.471	0.000	19.670	1.824
11	WS_east_60m_Max	m/s	60 m	110,120	65,759	59.72	4.920	0.000	34.020	2.535
12	WS_east_60m_Min	m/s	60 m	110,120	65,759	59.72	2.032	0.000	11.750	1.420
13	WS_east_60m_Std	m/s	60 m	110,120	65,759	59.72	0.604	0.000	7.544	0.352
14	WS_west_60m_Avg	m/s	60 m	110,120	57,070	51.83	3.289	0.000	19.360	1.850
15	WS_west_60m_Max	m/s	60 m	110,120	57,070	51.83	4.758	0.000	34.430	2.561
16	WS_west_60m_Min	m/s	60 m	110,120	57,070	51.83	1.844	0.000	10.960	1.435
17	WS_west_60m_Std	m/s	60 m	110,120	57,070	51.83	0.612	0.000	7.416	0.362
18	WS_east_40m_Avg	m/s	40 m	110,120	67,320	61.13	3.015	0.000	17.230	1.524
19	WS_east_40m_Max	m/s	40 m	110,120	67,320	61.13	4.526	0.000	33.290	2.333
20	WS_east_40m_Min	m/s	40 m	110,120	67,320	61.13	1.555	0.000	9.450	1.098
21	WS_east_40m_Std	m/s	40 m	110,120	67,320	61.13	0.617	0.000	7.676	0.344
22	WS_west_40m_Avg	m/s	40 m	110,120	54,879	49.84	2.968	0.000	17.130	1.549
23	WS_west_40m_Max	m/s	40 m	110,120	54,879	49.84	4.483	0.000	34.730	2.390
24	WS_west_40m_Min	m/s	40 m	110,120	54,879	49.84	1.523	0.000	9.450	1.102
25	WS_west_40m_Std	m/s	40 m	110,120	54,879	49.84	0.618	0.000	7.780	0.353
26	WindDir_79m_D1_WVT	°	79 m	110,120	69,641	63.24	123.2	0.0	360.0	96.2
27	WindDir_79m_SD1_WVT	°	79 m	110,120	69,695	63.29	8.5	0.0	78.8	9.0
28	WindDir_59m_D1_WVT	°	59 m	110,120	69,641	63.24	118.7	0.0	360.0	95.6
29	WindDir_59m_SD1_WVT	°	59 m	110,120	69,695	63.29	9.2	0.0	80.2	9.3
30	WindDir_39m_D1_WVT	°	39 m	110,120	67,417	61.22	113.5	0.0	360.0	94.9
31	WindDir_39m_SD1_WVT	°	39 m	110,120	67,471	61.27	10.3	0.0	79.3	9.5
32	RTD_temp_C_80m_Avg	°C	80 m	110,120	69,632	63.23	25.3	8.9	34.5	3.7
33	RTD_temp_C_80m_Max	°C	80 m	110,120	69,632	63.23	25.5	9.6	52.3	3.7
34	RTD_temp_C_80m_Min	°C	80 m	110,120	69,632	63.23	25.0	7.6	34.4	3.7
35	RTD_temp_C_80m_Std	°C	80 m	110,120	69,632	63.23	0.1	0.0	3.6	0.1
36	RTD_temp_C_4m_Avg	°C	4 m	110,120	69,554	63.16	24.6	7.9	35.9	4.8
37	RTD_temp_C_4m_Max	°C	4 m	110,120	69,554	63.16	24.8	8.0	36.3	4.8
38	RTD_temp_C_4m_Min	°C	4 m	110,120	69,554	63.16	24.3	7.9	35.6	4.7
39	RTD_temp_C_4m_Std	°C	4 m	110,120	69,554	63.16	0.1	0.0	2.4	0.1
40	HMP155_temp_80m_Avg	°C	80 m	110,120	69,673	63.27	25.2	8.9	34.4	3.7
41	HMP155_temp_80m_Max	°C	80 m	110,120	69,673	63.27	25.3	9.0	34.5	3.7
42	HMP155_temp_80m_Min	°C	80 m	110,120	69,673	63.27	25.1	8.5	34.4	3.7
43	HMP155_temp_80m_Std	°C	80 m	110,120	69,673	63.27	0.1	0.0	3.3	0.1
44	RH_80m_Avg	%		110,120	69,695	63.29	77.0	23.0	99.9	15.5
45	RH_80m_Max	%		110,120	69,695	63.29	78.3	24.0	100.0	15.1
46	RH_80m_Min	%		110,120	69,695	63.29	75.60	17.23	99.90	15.85
47	RH_80m_Std	%		110,120	69,695	63.29	0.74	0.01	14.99	0.80
48	HMP155_temp_4m_Avg	°C	4 m	110,120	69,654	63.25	24.5	7.8	35.5	4.7
49	HMP155_temp_4m_Max	°C	4 m	110,120	69,654	63.25	24.7	7.9	36.0	4.7
50	HMP155_temp_4m_Min	°C	4 m	110,120	69,654	63.25	24.3	7.7	35.3	4.7
51	HMP155_temp_4m_Std	°C	4 m	110,120	69,654	63.25	0.1	0.0	2.4	0.1
52	RH_4m_Avg	%		110,120	69,764	63.35	82.7	21.5	100.0	14.7

#	Label	Units	Height	Possible Data Points	Valid Data Points	Recovery Rate (%)	Mean	Min	Max	Std. Dev
53	RH_4m_Max	%		110,120	69,765	63.35	84.0	-29.9	100.0	14.0
54	RH_4m_Min	%		110,120	69,765	63.35	81.45	-54.29	99.90	15.35
55	RH_4m_Std	%		110,120	69,765	63.35	0.65	0.02	10.65	0.63
56	BP_80m_Avg	mbar	2 m	110,120	69,681	63.28	997.4	975.0	1,013.0	5.0
57	BP_80m_Max	mbar	2 m	110,120	69,681	63.28	997.6	976.0	1,013.0	5.0
58	BP_80m_Min	mbar	2 m	110,120	69,681	63.28	997.2	828.0	1,012.0	5.4
59	BP_80m_Std	mbar	2 m	110,120	69,681	63.28	0.1	0.0	44.9	0.3
60	BP_4m_Avg	mbar	2 m	110,120	69,695	63.29	1,005.4	986.0	1,018.0	5.1
61	BP_4m_Max	mbar	2 m	110,120	69,695	63.29	1,005.5	987.0	1,018.0	5.1
62	BP_4m_Min	mbar	2 m	110,120	69,695	63.29	1,005.3	834.0	1,018.0	5.2
63	BP_4m_Std	mbar	2 m	110,120	69,695	63.29	0.1	0.0	42.2	0.2
64	LWmV_Avg	Avg		110,120	69,765	63.35	229	-1,205	845	271
65	LWmV	Smp		110,120	69,765	63.35	229	-1,209	763	271
66	VBatt_Min	Volt		110,120	69,819	63.40	12.87	0.00	13.75	0.51
67	IBatt_Min	Amp		110,120	69,819	63.40	0.017	-0.482	1.273	0.323
68	ILoad_Min	m/s		110,120	69,819	63.40	0.215	0.000	0.550	0.087
69	V_in_chg_Min	m/s		110,120	69,819	63.40	8.70	0.00	20.44	8.54
70	I_in_chg_Min	°		110,120	69,819	63.40	0.199	-0.003	1.289	0.267
71	Chg_TmpC_Avg	°C	2 m	110,120	69,818	63.40	28.2	0.7	45.5	7.0
72	Chg_State	Smp		110,120	69,819	63.40	1.247	0.000	3.000	1.391
73	Ck_Batt	Smp		110,120	69,819	63.40	0	0	0	0
74	BattV_Min	Min		110,120	69,765	63.35	12.53	10.87	13.44	0.51
75	PTemp_C_Avg	°C	2 m	110,120	69,765	63.35	26.4	9.7	43.0	5.8
76	latitude_a	Smp		110,120	69,692	63.29	24	24	24	0
77	latitude_b	Smp		110,120	69,692	63.29	22.67	22.66	22.68	0.00
78	longitude_a	Smp		110,120	69,692	63.29	91	91	91	0
79	longitude_b	Smp		110,120	69,692	63.29	34.48	34.47	34.48	0.00
80	magnetic_variation	Smp		110,120	69,692	63.29	-0.5	-0.5	-0.5	0.0
81	fix_quality	Smp		110,120	69,819	63.40	1.996	0.000	2.000	0.085
82	nubr_satellites	Smp		110,120	69,819	63.40	9.09	0.00	12.00	0.96
83	altitude	Smp		110,120	69,692	63.29	32.70	14.20	51.10	3.84
84	max_clock_change	°	39 m	110,120	67,471	61.27	-44.9	-5,970.0	310.0	248.5
85	nubr_clock_change	Smp		110,120	69,819	63.40	0.604	0.000	4.000	1.161
86	Air Density	kg/m ³		110,120	110,120	100.00	1.175	1.106	1.231	0.031
87	WS_east_80m_Avg TI			110,120	49,106	44.59	0.25	0.03	23.67	0.67
88	WS_west_80m_Avg TI			110,120	44,813	40.69	0.29	0.03	20.25	0.66
89	WS_east_60m_Avg TI			110,120	64,971	59.00	0.25	0.03	20.50	0.53
90	WS_west_60m_Avg TI			110,120	55,968	50.82	0.33	0.03	23.00	0.82
91	WS_east_40m_Avg TI			110,120	66,825	60.68	0.29	0.04	20.00	0.62
92	WS_west_40m_Avg TI			110,120	54,369	49.37	0.30	0.04	21.00	0.62
93	WS_east_80m_Avg WPD	W/m ²		110,120	51,649	46.90	62	0	5,277	133
94	WS_west_80m_Avg WPD	W/m ²		110,120	45,830	41.62	65	0	5,407	143
95	WS_east_60m_Avg WPD	W/m ²		110,120	65,759	59.72	47	0	4,456	100
96	WS_west_60m_Avg WPD	W/m ²		110,120	57,070	51.83	43	0	4,249	96
97	WS_east_40m_Avg WPD	W/m ²		110,120	67,320	61.13	30	0	2,995	68
98	WS_west_40m_Avg WPD	W/m ²		110,120	54,879	49.84	30	0	2,943	70